

CDL Flowchart

Examine the Driver's License

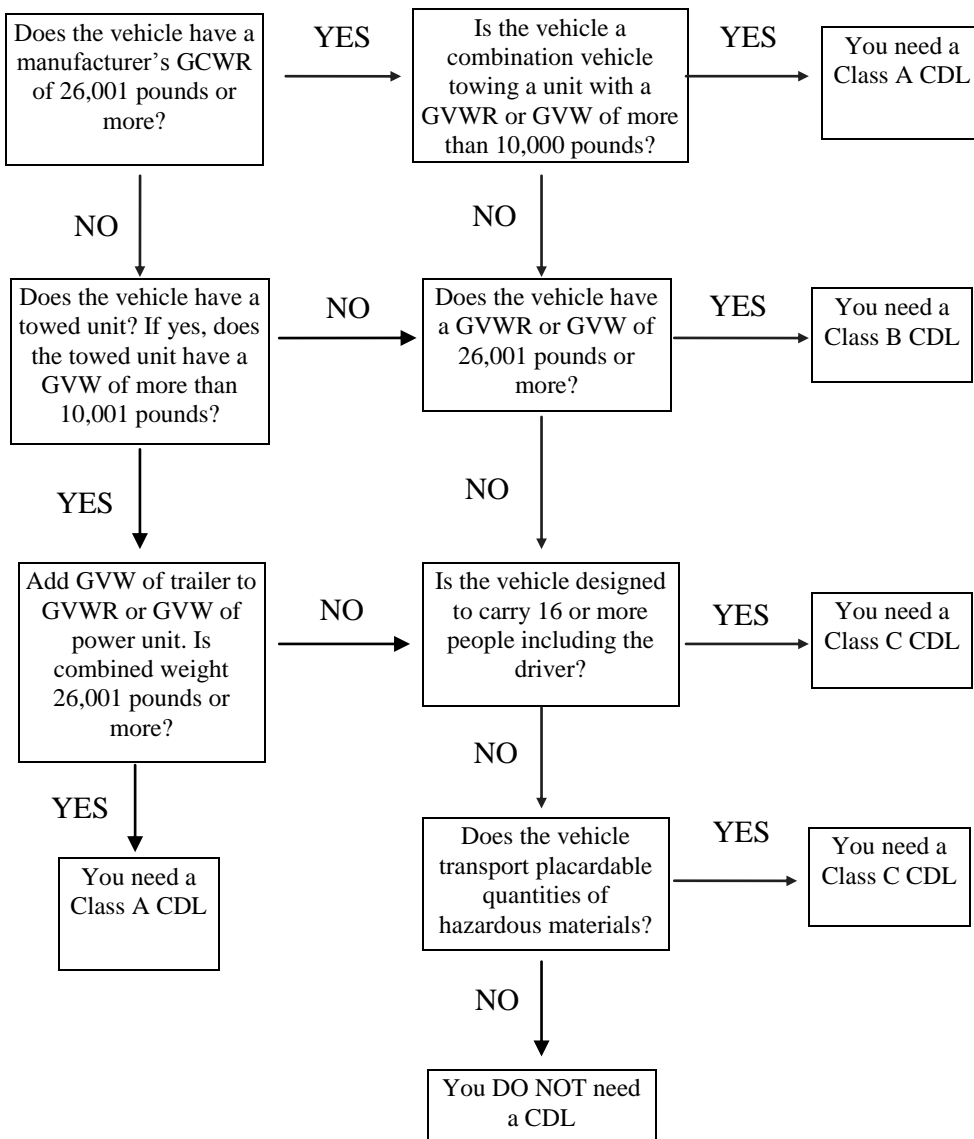
There are three types of commercial driver's licenses: **Class A, B, and C**. Drivers of light vehicles -- passenger cars and pick up trucks -- will be issued an operator's license.

Class A -- Combination of vehicles with a gross combination weight rating (GCWR) or gross vehicle weight over 26,000 pounds, provided the GVWR or GVW of the vehicles(s) being towed is greater than 10,000 pounds. A driver with a Class A license will be able to drive Class A, B, and C commercial vehicles with proper endorsements when required.

Class B -- Single vehicles with a GVWR or GVW over 26,000 pounds, or any such vehicle towing a vehicle under 10,000 GVWR or GVW. A driver with a Class B license will be able to drive Class B and C commercial vehicles with proper endorsement when required.

Class C -- Vehicles with a GVWR or GVW less than 26,001 pounds. Class C is strictly for vehicles designed to carry 16 or more people or carry hazardous materials in quantities large enough to require a placard. A Class C license holder will be able to drive Class C commercial vehicles only.

383.5 Definition of GCWR -- means the value specified by the manufacturer as the loaded weight of a combination (articulated) vehicle. In absence of a value specified by the manufacturer, the GCWR will be determined by adding the GVWR of the power unit and the total weight of the towed unit and load thereon.



ENDORSEMENTS
 T = Double/Triple Trailer
 P = Passenger vehicle designed to carry 16 or more people, including driver.
 N = Tank Vehicle
 H = Hazardous Materials
 X = H/M and Tank Vehicle
 S = School Bus

EXEMPTIONS
 Drivers of the following are exempted from obtaining a commercial driver's license:
 1. Recreational vehicles for personal use.
 2. Military vehicles.
 3. Emergency vehicles.
 4. Farm vehicles (not used for hire or driven 150 miles from the farm)