

# Xeriscape, not Zeroscape: The Art and Design of Desert Landscaping

Creative approaches to water conserving landscape


## What is Xeriscape?

- The word xeriscape was coined by combining xeros (Greek for "dry") with landscape. Xeriscape™ and the logo are registered trademarks of Denver Water, the City of Denver, Colorado's, Water Department.



## What is Xeriscape?

- "Water conservation through creative landscaping."



## Xeriscape is NOT:

- Just rocks and gravel
- A boring monoculture of spiny plants



## Xeriscape is NOT:

- Lawn-less landscaping



## What is Xeriscape?

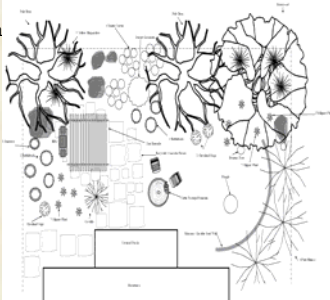
Xeriscape is actually a combination of seven principles that when followed, create a lush and colorful landscape while saving water.





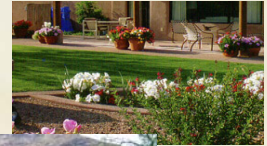
## Use bubble diagram to make a final master plan.

The master plan serves as the blueprint for constructing the finished Xeriscape. It includes all the details necessary for installation.



## Principle Two: Create practical turf areas

- Determine needs for turf and contain and retain turf.



## Principle Three: Select and group plants appropriately

- Cactus and other desert perennials are NOT the only plants allowed in a Xeriscape. The success to waterwise gardening is to put the right plants in the right place and group plants with similar needs together.



## Every yard contains several different microclimates.

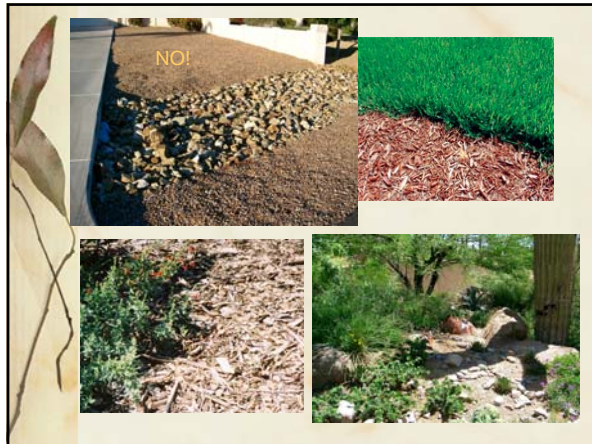
- Plants that do well in full sun and dry conditions would do best in a southern or western exposure.
- Plants that prefer cooler sites do better with an eastern or northern exposure.
- Higher water-using plants would do best in low-lying drainage sites or areas next to downspouts or water spigots.
- For efficient irrigation, plants should also be grouped by sprinkler zone according to their watering needs.

## Other considerations for plant selection.

- Plants can be selected based on color, texture or fragrance.
- Some plants have blossoms that attract butterflies or hummingbirds.
- Other plants may attract a variety of wildlife such as quail or desert tortoises.

## Principle Four: Use of Mulches

- Mulches cover the soil and reduce evaporation from planted areas.
- Mulches may be either organic or inorganic.
- In our area, organic mulches may include bark chips and wood grindings.
- Decomposed granite and crushed rock are the two most popular inorganic mulches.



### Principle Five: Soil Amendments or Improvements

- Most low water use plants thrive naturally in our desert soils, so amendments such as fertilizers and soil supplements are usually not necessary.
- Soil amendments most likely will be needed for turf areas and vegetable and flower beds.





### Principle Six: Efficient Irrigation

Most all new plants should be watered regularly to get them established.

Trees, shrubs, groundcovers and turf areas should each be on their own valves so their irrigation times can be set independently.

Adjust your irrigation schedule at least four times each year.

### Principle Seven: Appropriate Maintenance

When properly designed and maintained, Xeriscapes save water, time and money through reduced plant water needs and lower maintenance requirements.




All landscapes need some care and most plants need supplemental water in our desert environment. Proper pruning techniques will retain the natural look to your plants.




The landscape represented a sanctuary of protection and peaceful comfort. I try to guard the beauty and privacy of it with respect and consideration.

Walter Annenberg